

LED T8 Tube

LT200090/mb-06v00,LT200160/mb-12v00,LT200230/mb-15v00,
LT200065/mb-06v00,LT200160/mb-12v01,LT200240/mb-15v00,
LT200240/mb-15v01

MEGAMAN®

Instruction Manual

TECHNICAL SPECIFICATION

Model Number	LT200090/mb-06v00	LT200160/mb-12v00	LT200230/mb-15v00	LT200065/mb-06v00	LT200160/mb-12v01	LT200240/mb-15v00	LT200240/mb-15v01
Wattage	9W	16W	23W	6.5W	16W	24W	24W
Voltage	220-240V~	220-240V~	220-240V~	220-240V~	220-240V~	220-240V~	220-240V~
Frequency	50/60Hz	50/60Hz	50/60Hz	50/60Hz	50/60Hz	50/60Hz	50/60Hz
Rated Current	54mA	100mA	138mA	39mA	100mA	144mA	144mA
Length	603mm	1212mm	1513mm	603mm	1212mm	1513mm	1513mm

CAUTIONS

- Read the entire manual carefully before installation and operation.
- Only licensed and qualified electricians are allowed to perform the installation.
- Before the installation or replacement of the lamp, turn it off and allow it to cool down. Heat-resistant gloves are mandatory when handling the tube.
- The LED T8 tube can be used to replace the traditional fluorescent T8 tube with G13 lamp base and corresponding length mentioned in the above table.
- MEGAMAN® LED T8 tube cannot work with electronic ballast.
- The LED starter should be used with the LED T8.
- Lamp is suitable for 50Hz or 60Hz operation.
- Dimming is not allowed.
- To replace the fluorescent T8 tube, the existing starter has to be removed together with the tube. A MEGAMAN® starter is provided to work with MEGAMAN® LED T8 tube.
- The minimum safety distance from the illuminated object is 0.1m.
- Any constructive change of the luminaire in case of applying retrofit LED lamp shall not be permitted.
- The lamp should be used in dry conditions or in a luminaire that provides protection.
- The lamp is not suitable to be used in emergency luminaires designed for double-capped fluorescent lamp(s).
- This lamp may not be suitable for use in all applications where a traditional fluorescent lamp has been used. The temperature range of this lamp is more restricted. In cases of doubt regarding the suitability of the application the manufacturer of this lamp should be consulted.
- The manufacturer accepts no liability for any damages resulting from the misuse of the lamp or when it is used with inappropriate equipment.
- Consult your dealer for any enquiries.

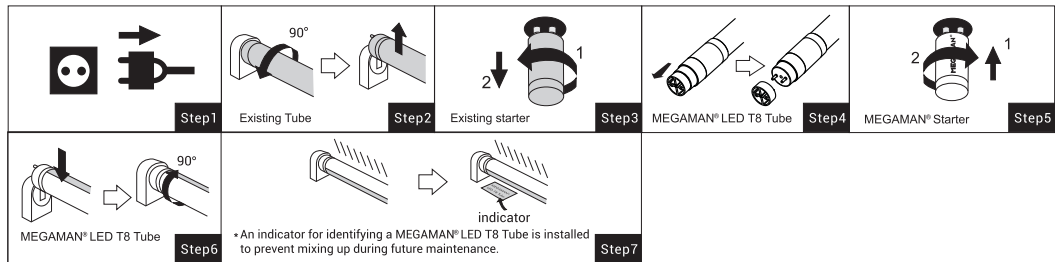
ATTENTIONS

- Instant start is allowed.
- The LED T8 tube is designed for general lighting service (excluding for example explosive atmosphere).
- The overall energy efficiency and light distribution are determined by the installation design.
- The operating temperature of LED T8 tube is -30°C to +45°C.

PART LIST

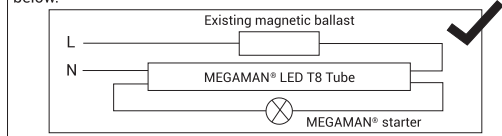
LED tube x1 MEGAMAN® starter: TRX (LA11148) x1

Installation

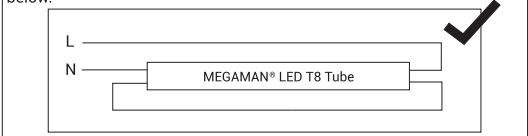


WIRING DIAGRAM

If magnetic ballast and starter are available, wiring method is shown below.



If magnetic ballast and starter are not available, wiring method is shown below.



Correct Disposal of This Product

This marking indicates that this product should not be disposed with other household wastes throughout the EU. To prevent possible harm to the environment or human health from uncontrolled waste disposal, recycle it responsibly to promote the sustainable reuse of material resources. To return your used device, please use the return and collection systems or contact the retailer where the product was purchased. They can take this product for environmental safe recycling.

